

# FLOORPLAN GUIDE



KING'S CROWN





It's never too early to  
enjoy what assisted  
living has to offer.

# Welcome to King's Crown on The Island



King's Crown offers an elegant setting for individuals who value their independence but also appreciate the comfort that comes with services available at their fingertips.

Everyone wants to remain healthy and active during their retirement years; however, as we grow older, we sometimes need the help of others to maintain our daily routine. King's Crown is located in The Island neighborhood with all of the benefits and beautiful surroundings the community provides. You can watch manatees at play in the lagoon, create a masterpiece in the art studio, meet a friend for lunch, enjoy a walk in the adjacent park or attend a concert in this vibrant community.

King's Crown has a reputation for setting a high standard for assisted living in Southwest Florida. King's Crown residents enjoy their own private apartment outfitted with personal furnishings and treasured family mementos. A special painting, a favorite chair—each resident creates their own unique residence—a place they can truly call home. Residents will enjoy a wide variety of services and features to enhance their daily living and receive the highest level of independence their health will allow.



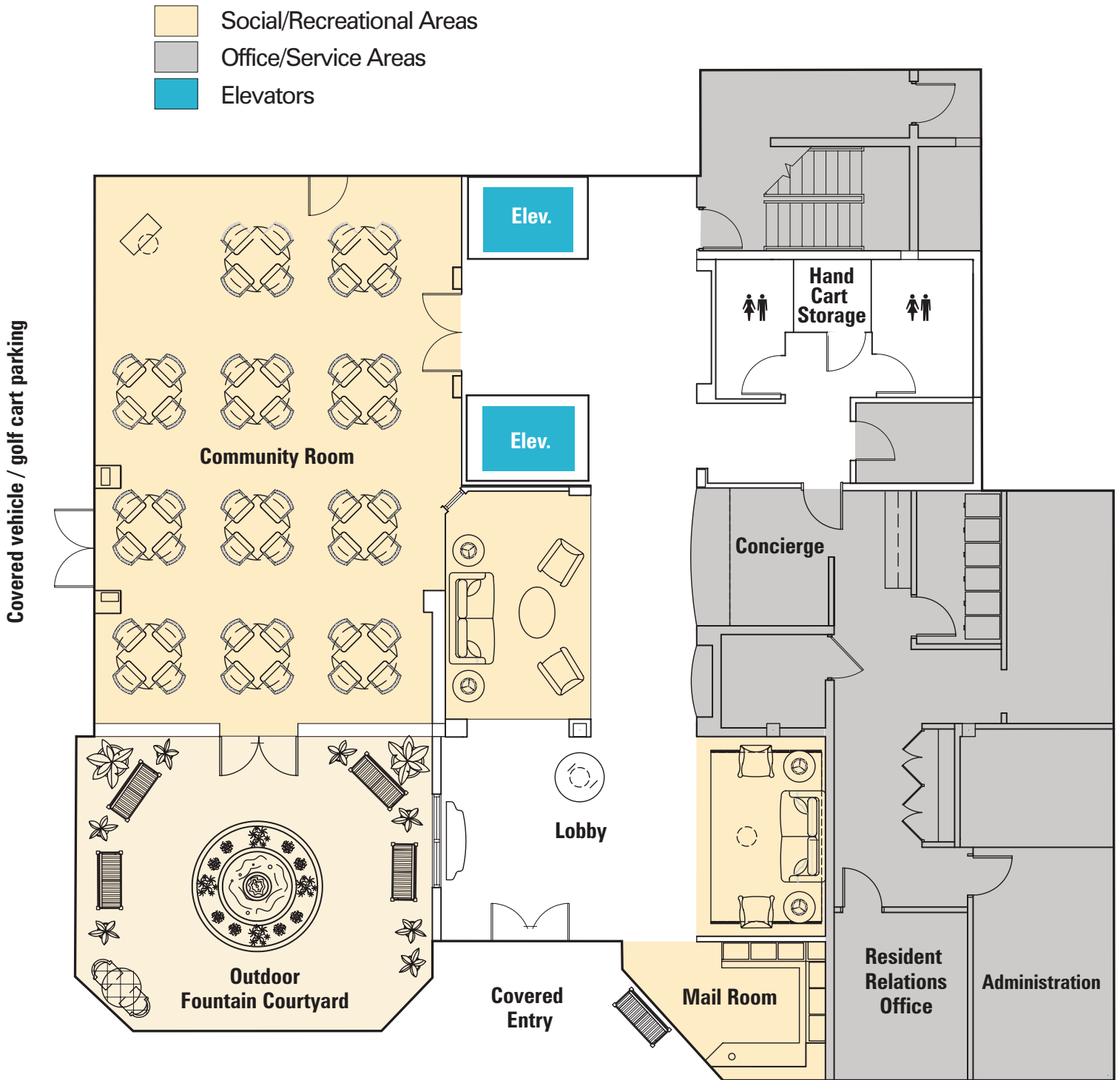


**KING'S CROWN GRAND SALON**

Artist Rendering subject to change.



# BUILDING PLANS - GROUND FLOOR



The approach to the King's Crown begins under the covered entry of a spacious porté-cochère. Double doors lead into a gracious foyer and reception area staffed by friendly staff. The adjacent community room is a bustling common area where residents enjoy cards, games, social activities, special programs, exercise classes and more. The community room opens out onto a private fountain courtyard facing the heated resort-style swimming pool.

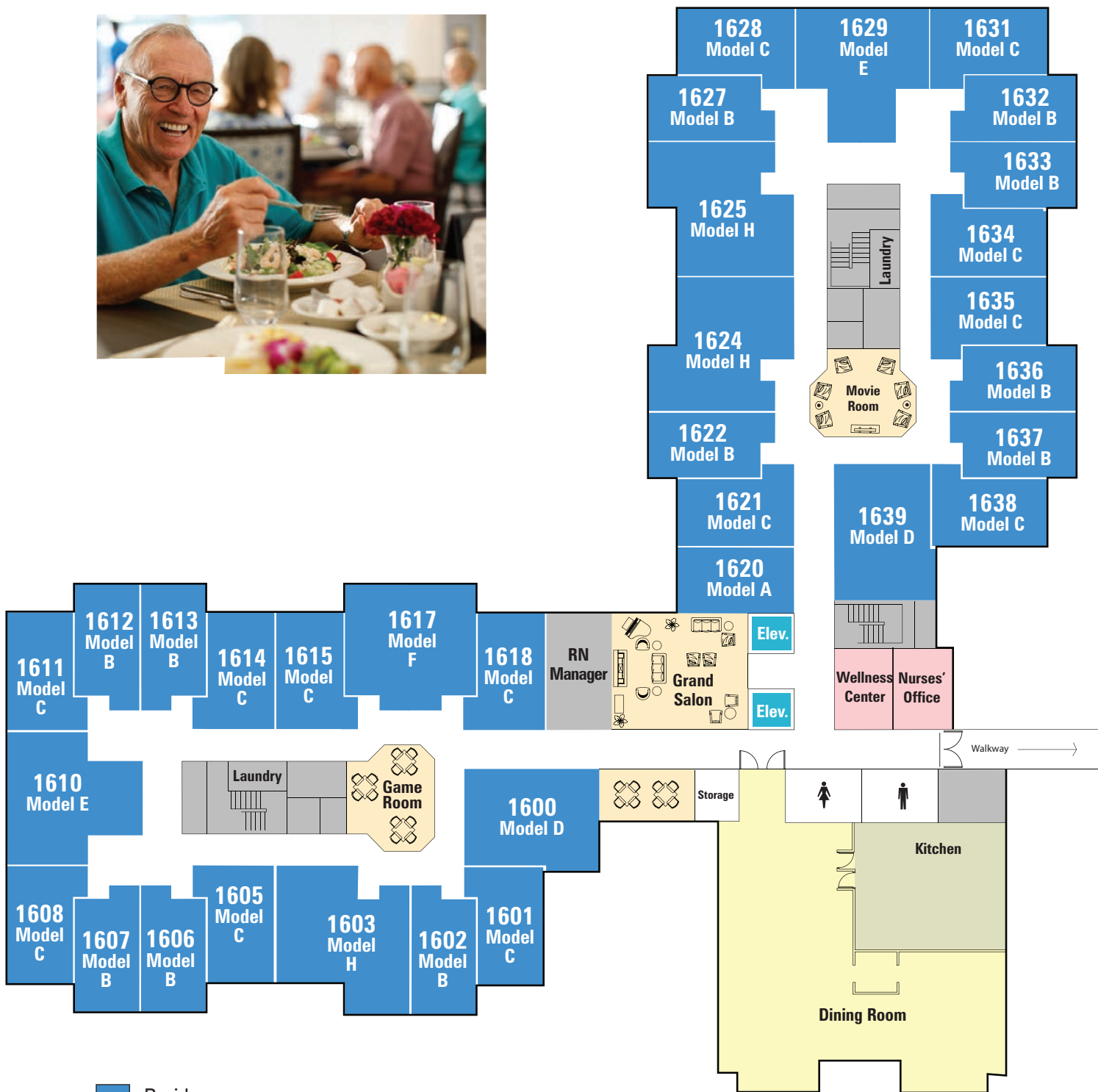
# Delicious Dining



The first floor of the King's Crown features an elegant dining room where meals are served three times a day, seven days a week. Residents and their guests enjoy restaurant-style dining service and select their meals from menus which change daily. Special functions, parties and holiday meals are planned regularly throughout the year.

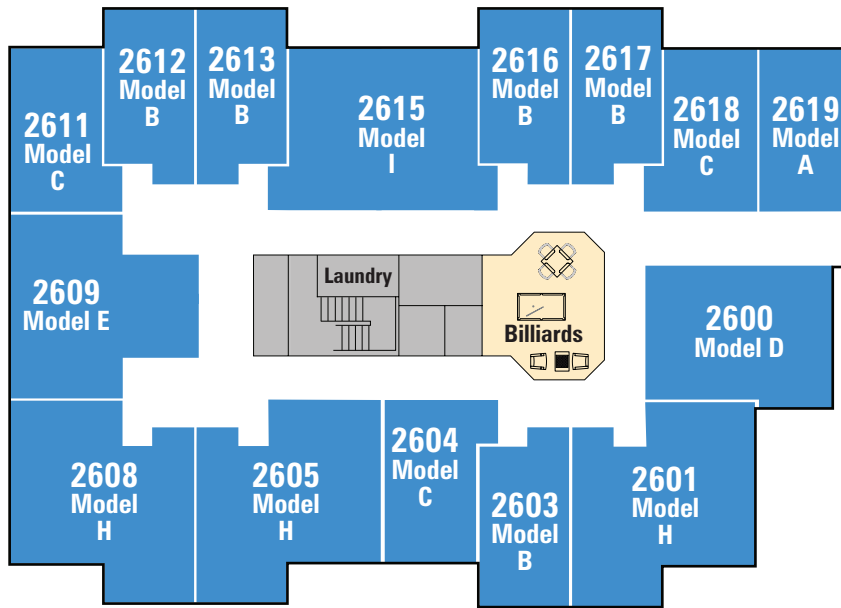
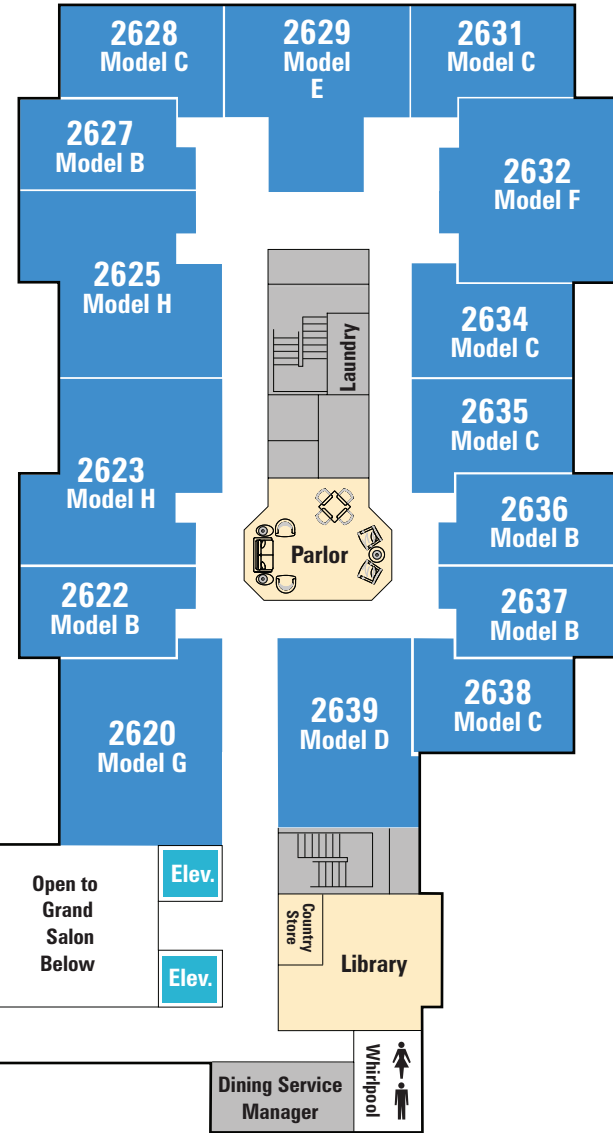


# BUILDING PLANS - FIRST FLOOR



- Residences
- Social/Recreational Areas
- Dining
- Medical/Care Areas
- Office/Service Areas
- Elevators

# BUILDING PLANS - SECOND FLOOR

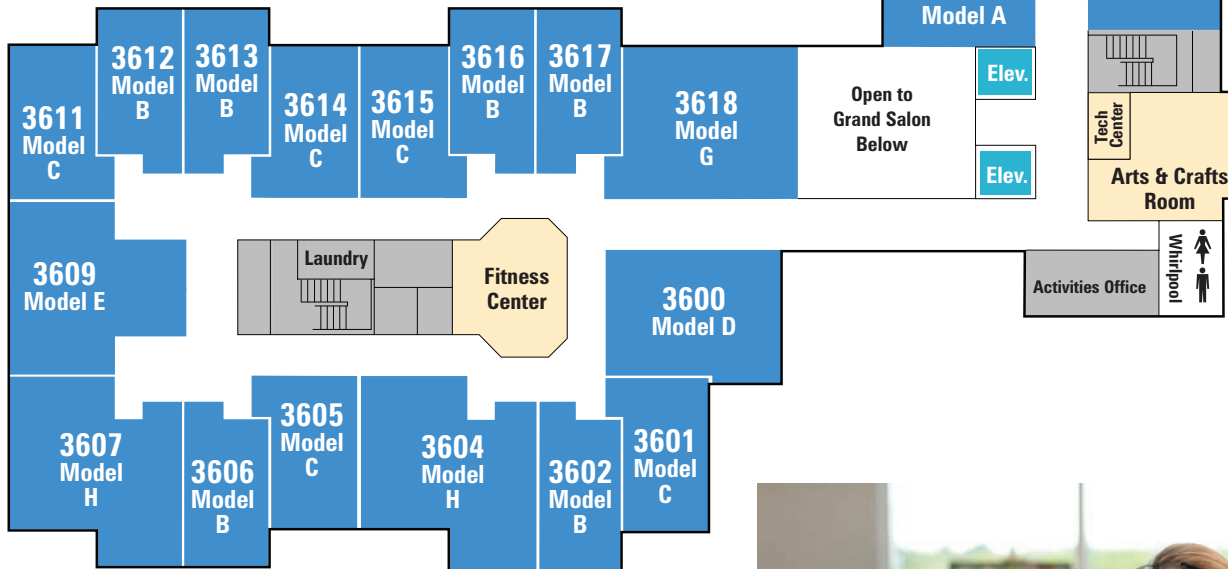
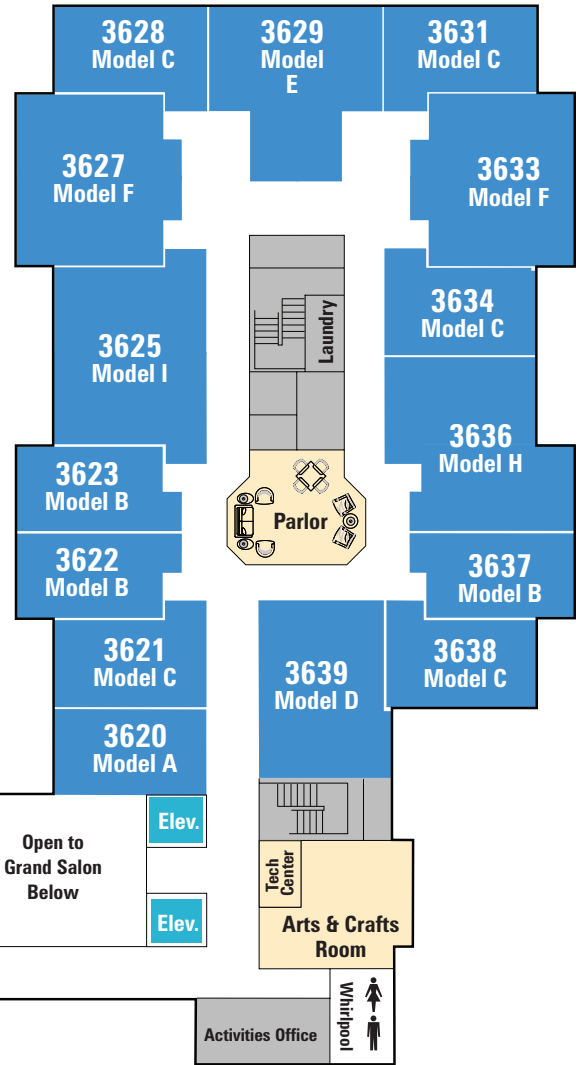


- Social/Recreational Areas
- Office/Service Areas
- Elevators

King's Crown building amenities include spacious parlors, an arts and crafts room, and a library. A recreational leader plans events that range from projects designed for lifelong learning to social functions created for developing new friendships.



# BUILDING PLANS - THIRD FLOOR



- Residences
- Social/Recreational Areas
- Medical/Care Areas
- Office/Service Areas
- Elevators





# Floorplans

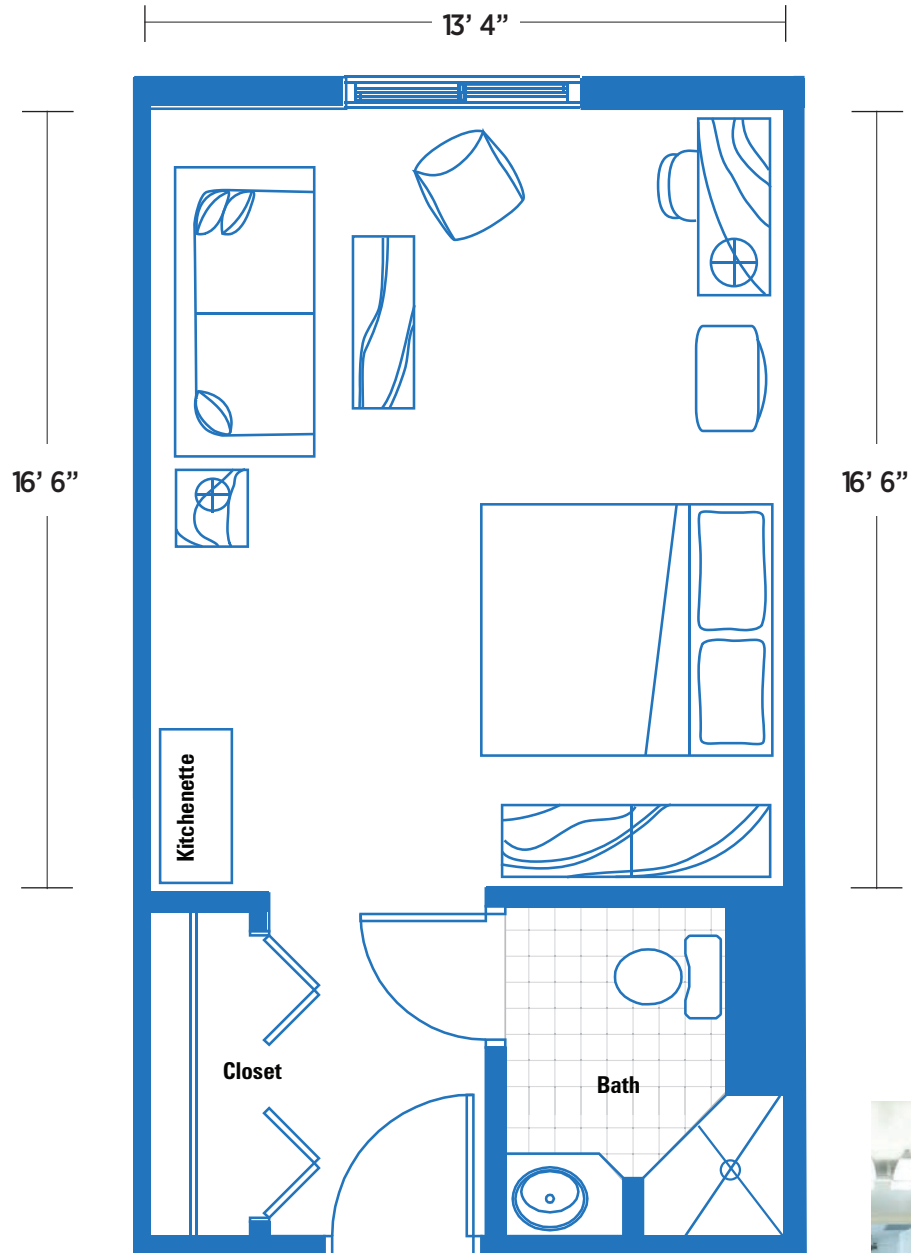
Choose the floorplan that suits your lifestyle and budget.



The King's Crown features 94 private residences. A variety of floorplans provide a range of sizes and prices for greater flexibility. Residents may bring their own furnishings or furnished apartments are also available. Friendly care staff perform a number of routine services including assistance in daily bed making, weekly linen and towel service, and housekeeping.



## 312 Square Feet

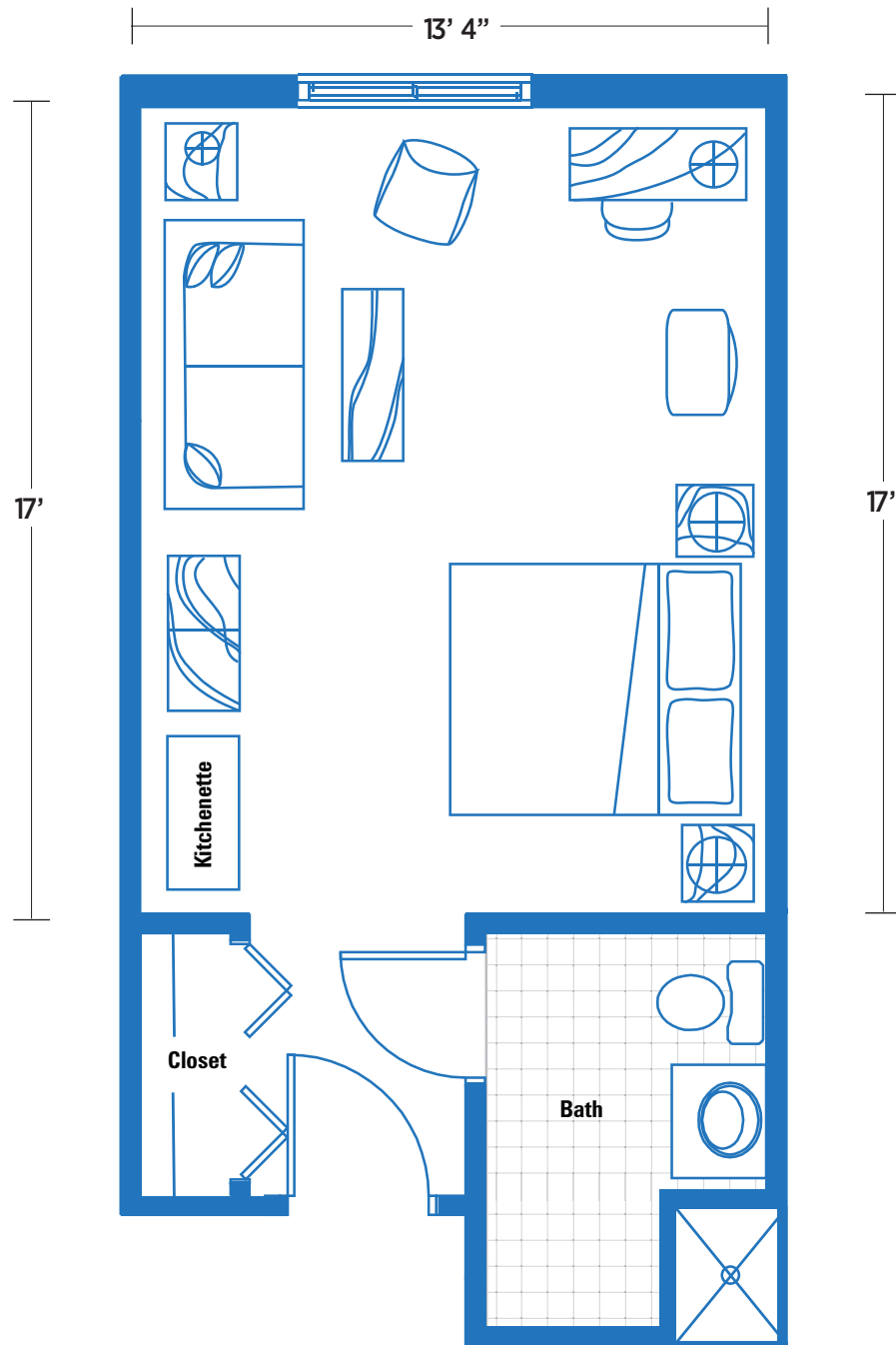


- Kitchenette
- Refrigerator/cabinet optional
- Walk-in shower
- Alcove lighting
- Furnished apartments available



# Model B

318 Square Feet

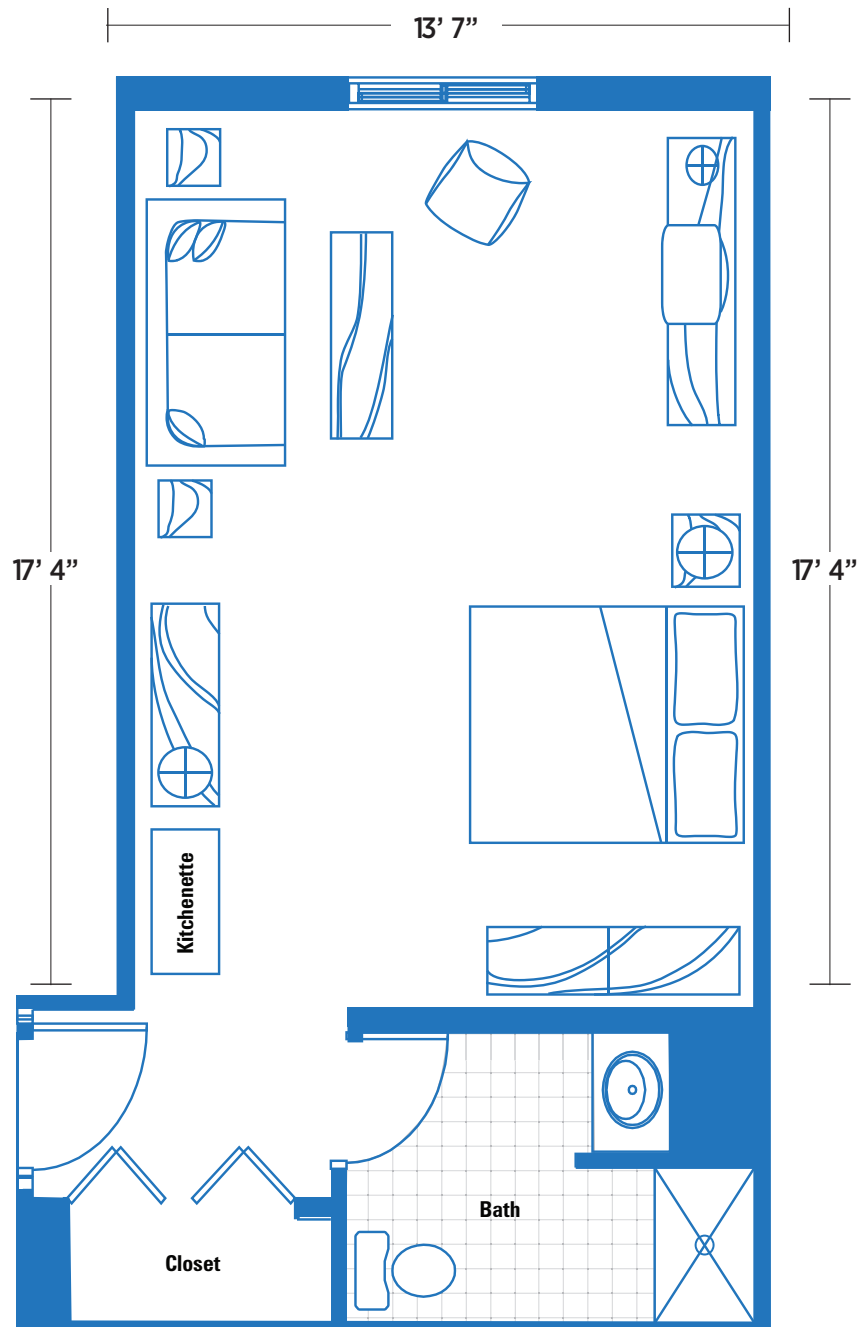


- Kitchenette
- Walk-in shower
- Alcove lighting
- Furnished apartments available

Drawings not to scale. Dimensions are approximate and may vary slightly.

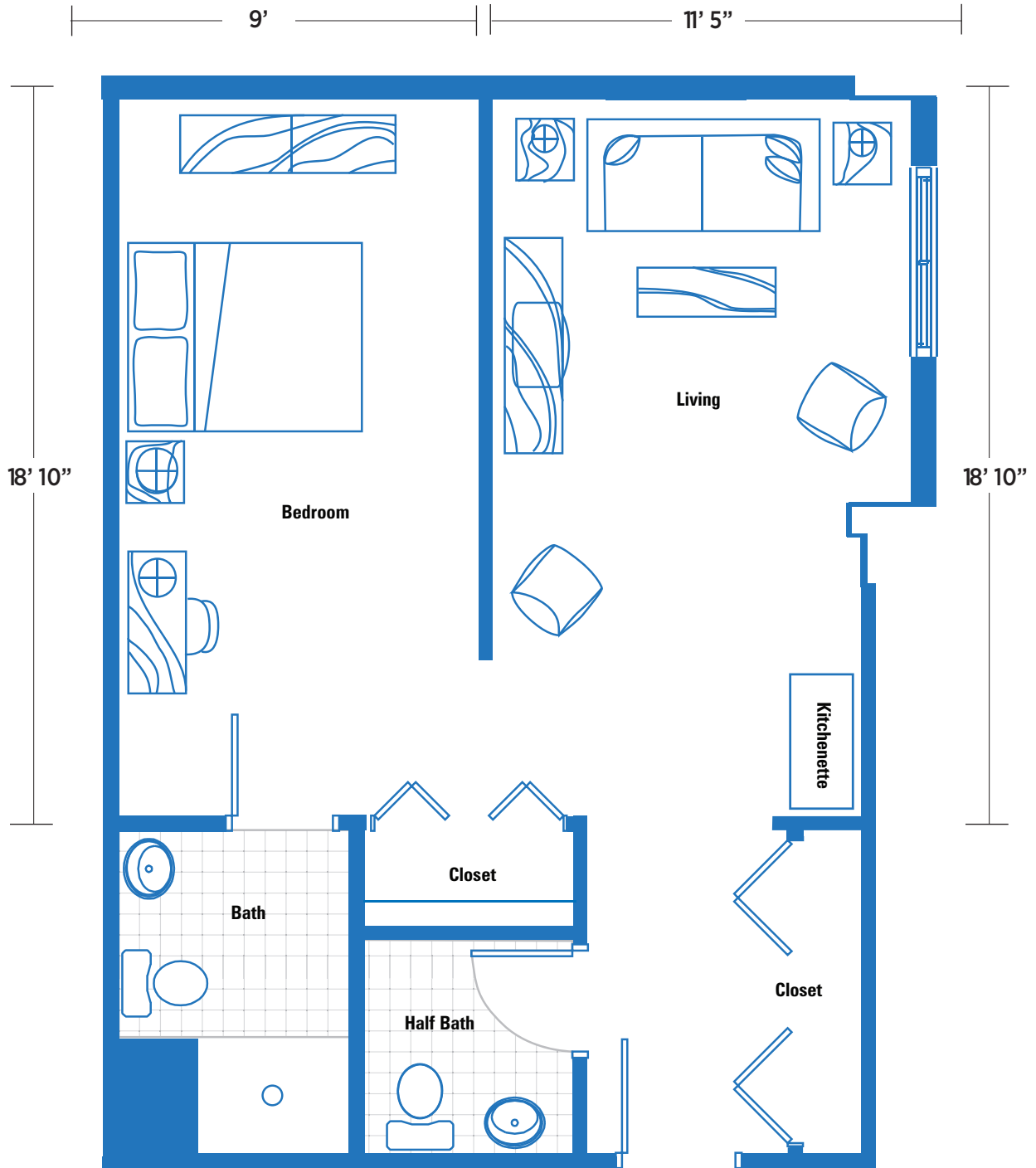


## 339 Square Feet



# Model D

570 Square Feet

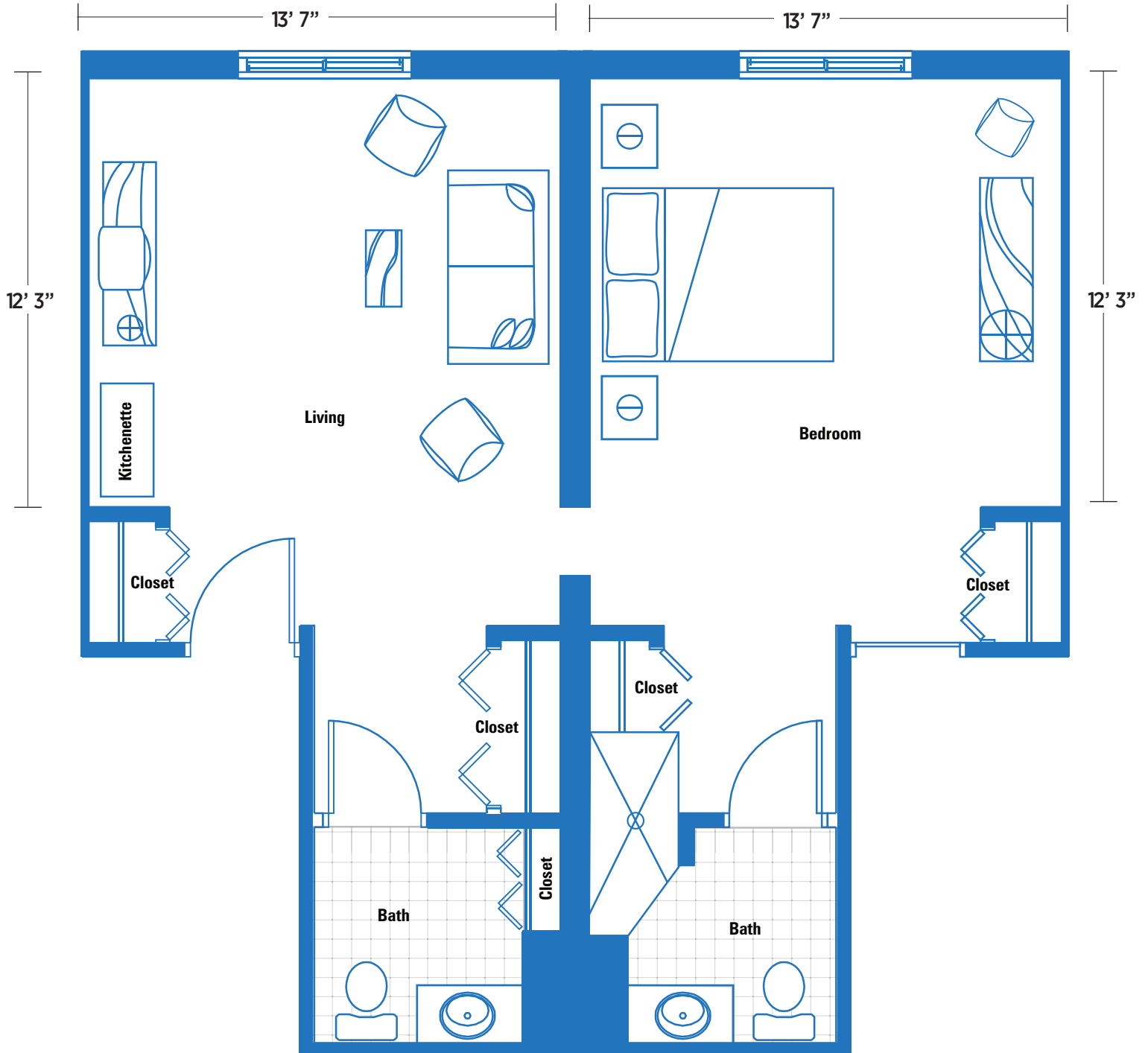


Drawings not to scale. Dimensions are approximate and may vary slightly.

Opening location and style differs unit to unit.



## 596 Square Feet

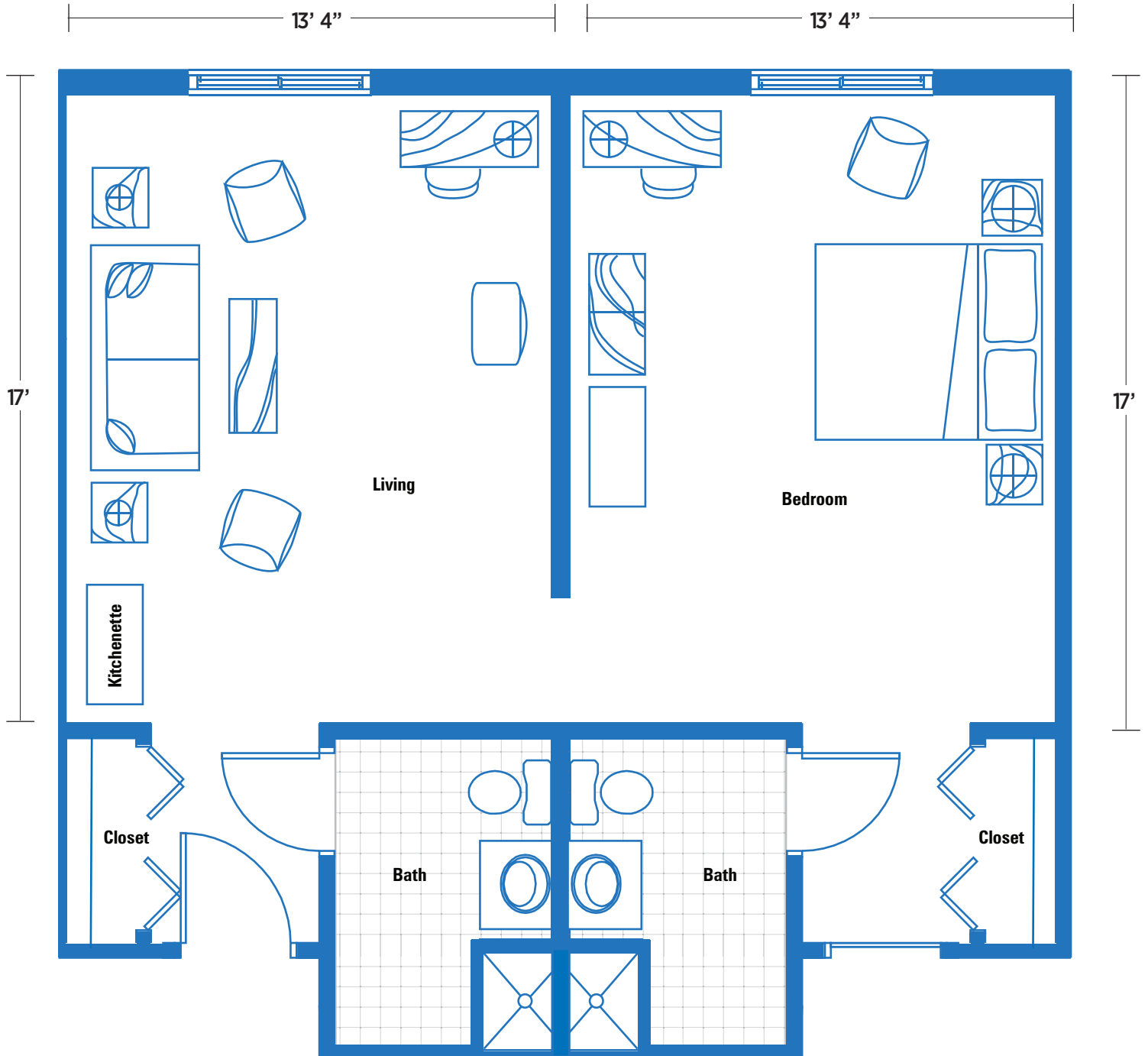


Drawings not to scale. Dimensions are approximate and may vary slightly.

Opening location and style differs unit to unit.

# Model F

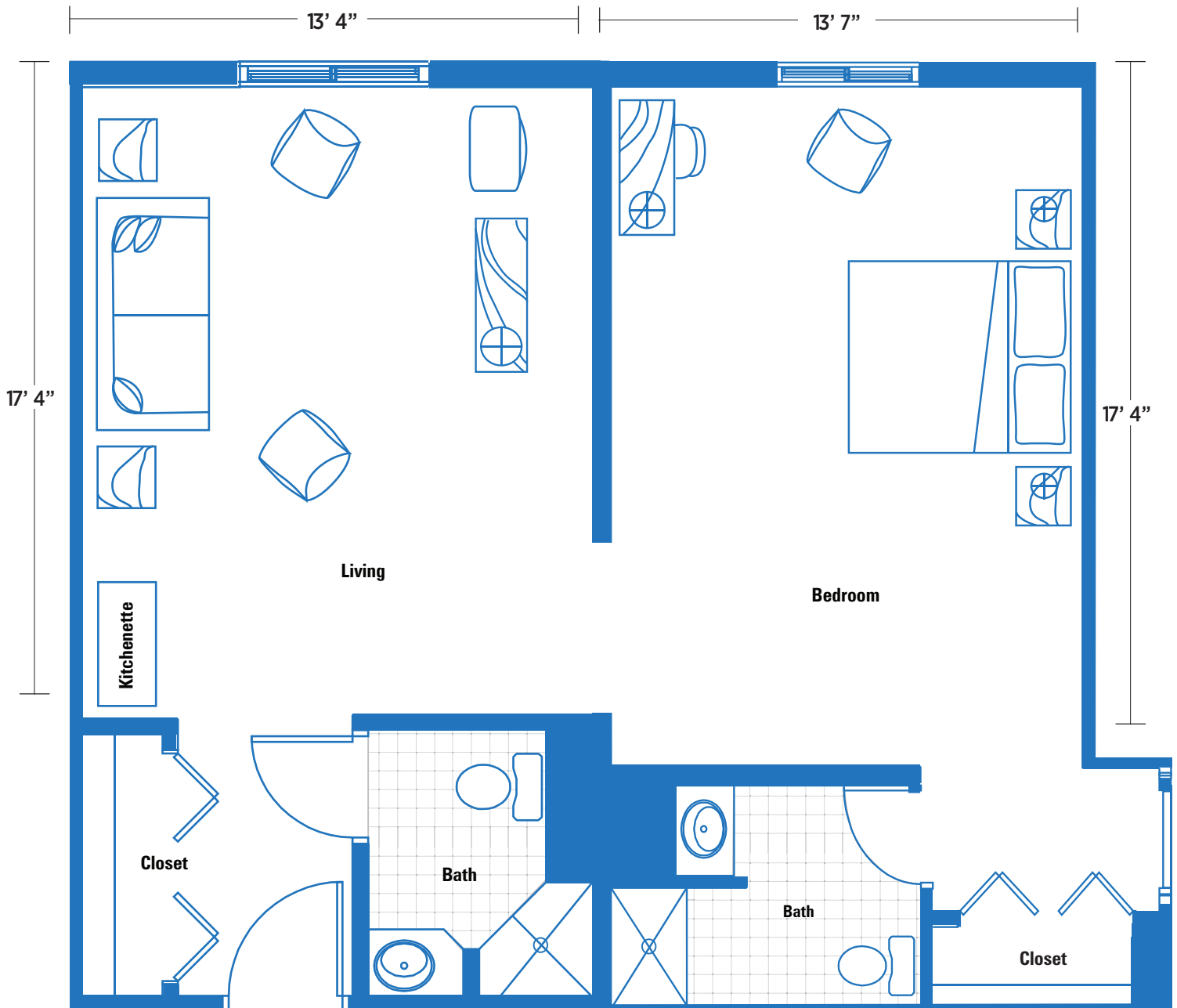
636 Square Feet



Drawings not to scale. Dimensions are approximate and may vary slightly.

Opening location and style differs unit to unit.

## 651 Square Feet



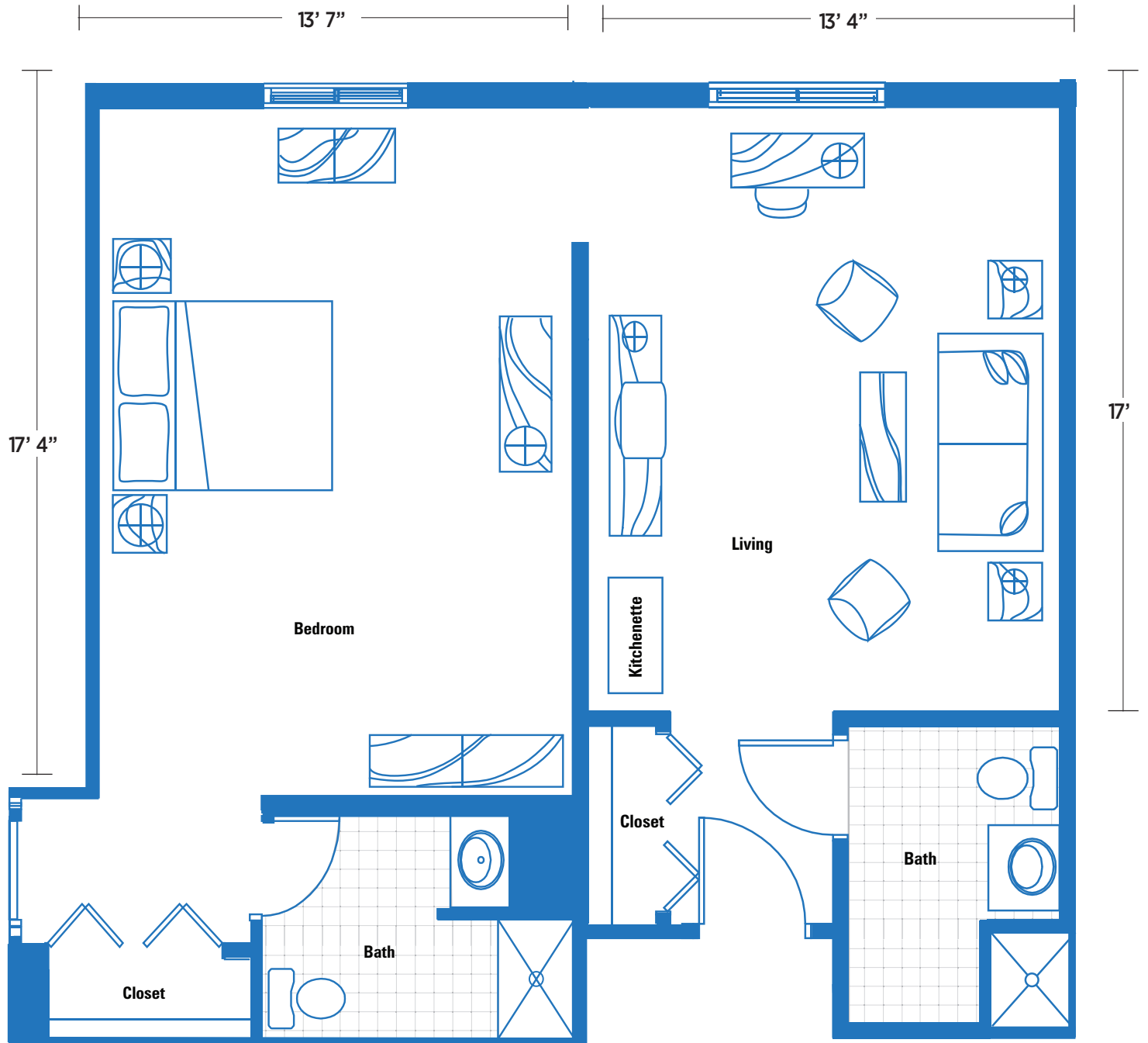
Drawings not to scale. Dimensions are approximate and may vary slightly.

Opening location and style differs unit to unit.



# Model H

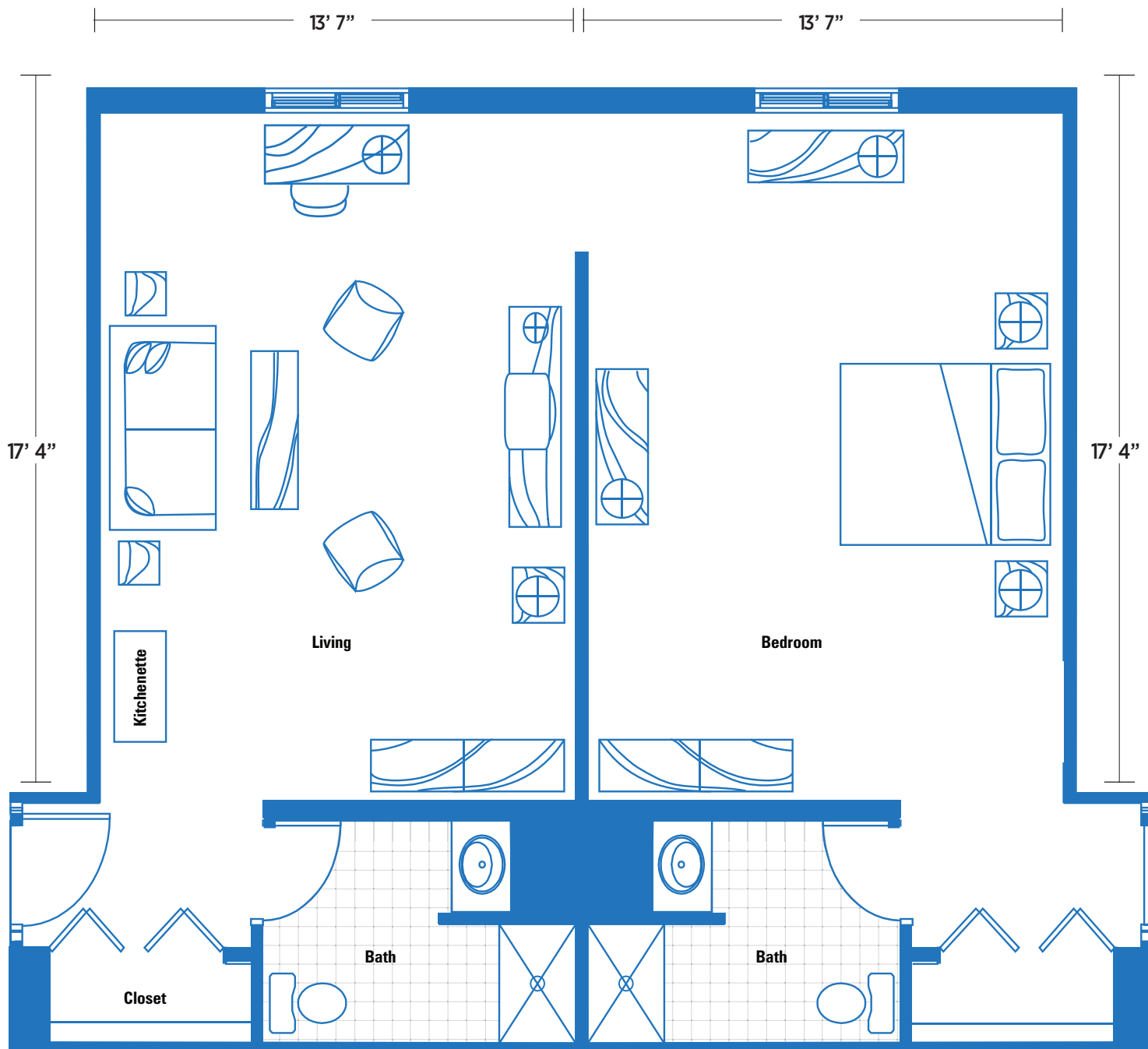
657 Square Feet



Drawings not to scale. Dimensions are approximate and may vary slightly.

Opening location and style differs unit to unit.

## 678 Square Feet



Drawings not to scale. Dimensions are approximate and may vary slightly.

Opening location and style differs unit to unit.

# A Perfect Setting

King's Crown is located on The Island at Shell Point and includes 94 private residences that are available to both residents of Shell Point as well as individuals living outside the community.

King's Crown provides daily personal care and assistance based on your medical needs—offering individuals or couples a higher quality of life through supportive services.

The Island neighborhood features a lovely park, beach and manicured gardens located along a peaceful canal. Paved walkways follow the mangrove-lined waterway where manatees, dolphins and birds flourish.

SHELL  POINT  
RETIREMENT COMMUNITY

(239) 454-2175

**KING'S CROWN AT SHELL POINT** • 3699 King's Crown Court • Fort Myers, Florida 33908  
Fax (239) 466-9125 • [www.shellpoint.org](http://www.shellpoint.org)

Shell Point is a nonprofit ministry of The Christian and Missionary Alliance Foundation, Inc.