

# FLOORPLAN GUIDE



THE ARBOR



Your new lifestyle  
begins the moment  
you enter the building.

# Welcome to The Arbor at The Woodlands



The Arbor offers an elegant setting for individuals who enjoy their independence but also appreciate the services available at their fingertips.

**E**veryone wants to remain healthy and active during their retirement years; however, as we grow older, we sometimes need the help of others to maintain our daily routine. The Arbor is located in The Woodlands neighborhood with all of the benefits and beautiful surroundings the community provides. Sparkling lakes, miles of walking trails, fragrant gardens, tennis courts, a swimming pool and much more add to the ambiance of this state-of-the-art facility.

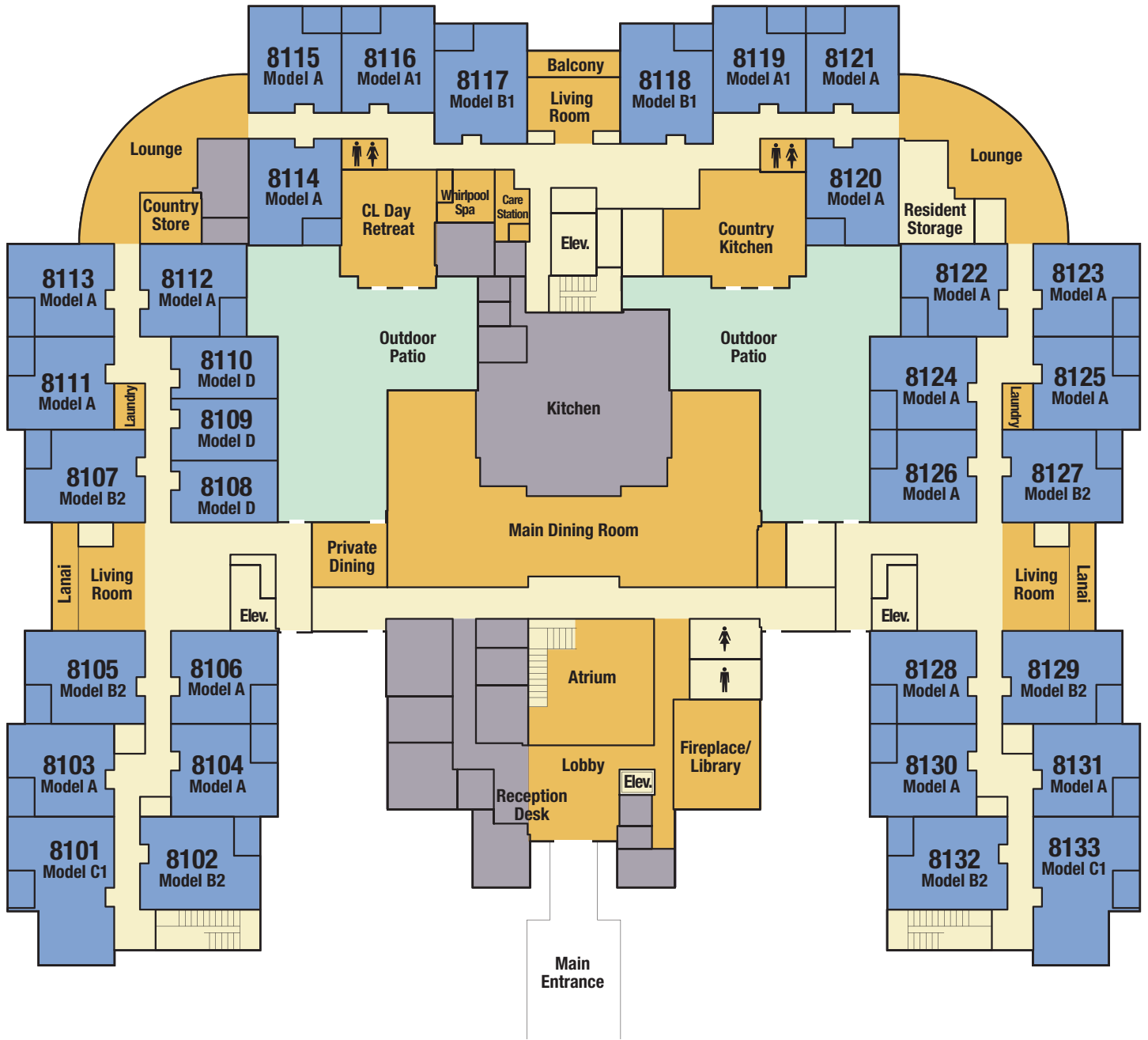
Arbor residents enjoy their own private apartment outfitted with personal furnishings and treasured family mementos. A special painting, a favorite chair — each resident creates their own unique residence — a place they can truly call home. Residents will enjoy a wide variety of services and features to enhance their daily living and provide the highest level of independence their health will allow. The Arbor sets a high standard for assisted living in Southwest Florida.

*The approach to The Arbor begins under the covered entry of a spacious porté cochere. Double doors lead into a gracious foyer and reception area staffed by friendly Arbor staff. The building is designed for comfortable lifestyles and diverse recreational activities, as well as easily accessible supportive services when needed.*

# FIRST FLOOR



An intimate fireplace lounge serves as the focal point and creates a comfortable gathering place for residents, their family and friends.



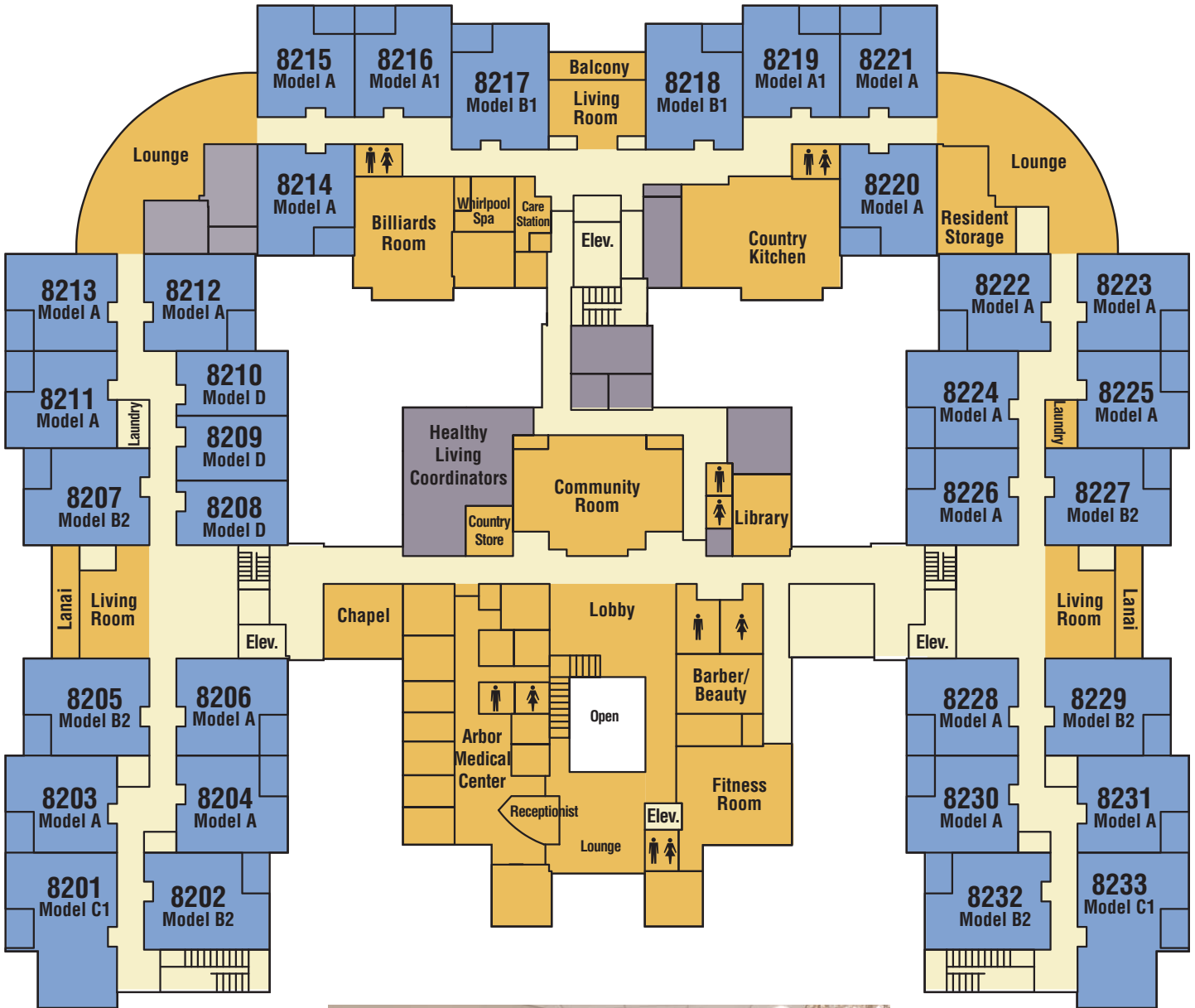
# Delicious Dining



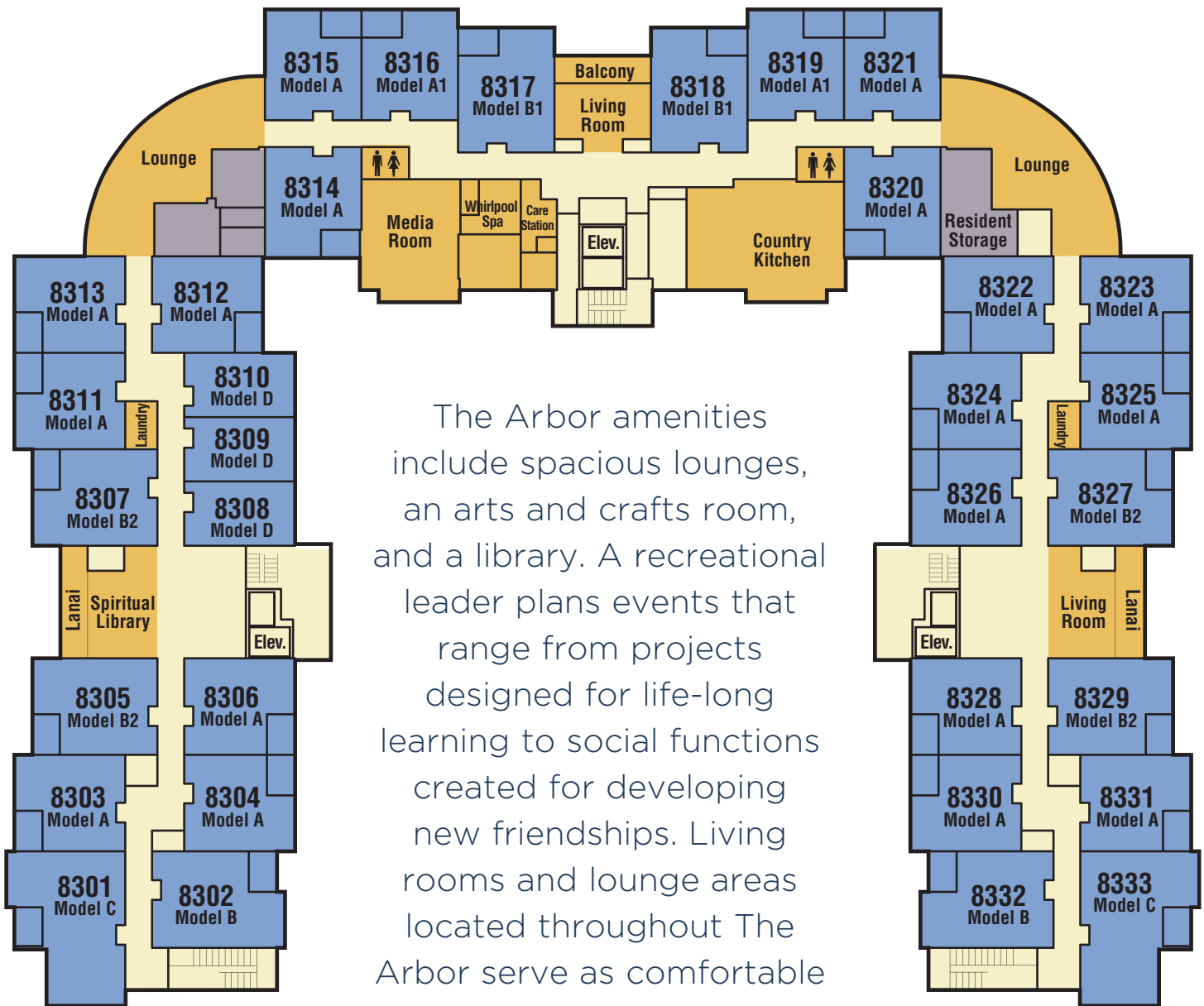
The first floor of The Arbor features an elegant dining room where lunch and dinner are served seven days a week. Residents and their guests enjoy restaurant-style dining service and select their meals from menus which change daily. For breakfast, each floor features a country kitchen for more casual dining. Stop by for a hot breakfast, or perhaps a cup of coffee and a croissant.



# SECOND FLOOR



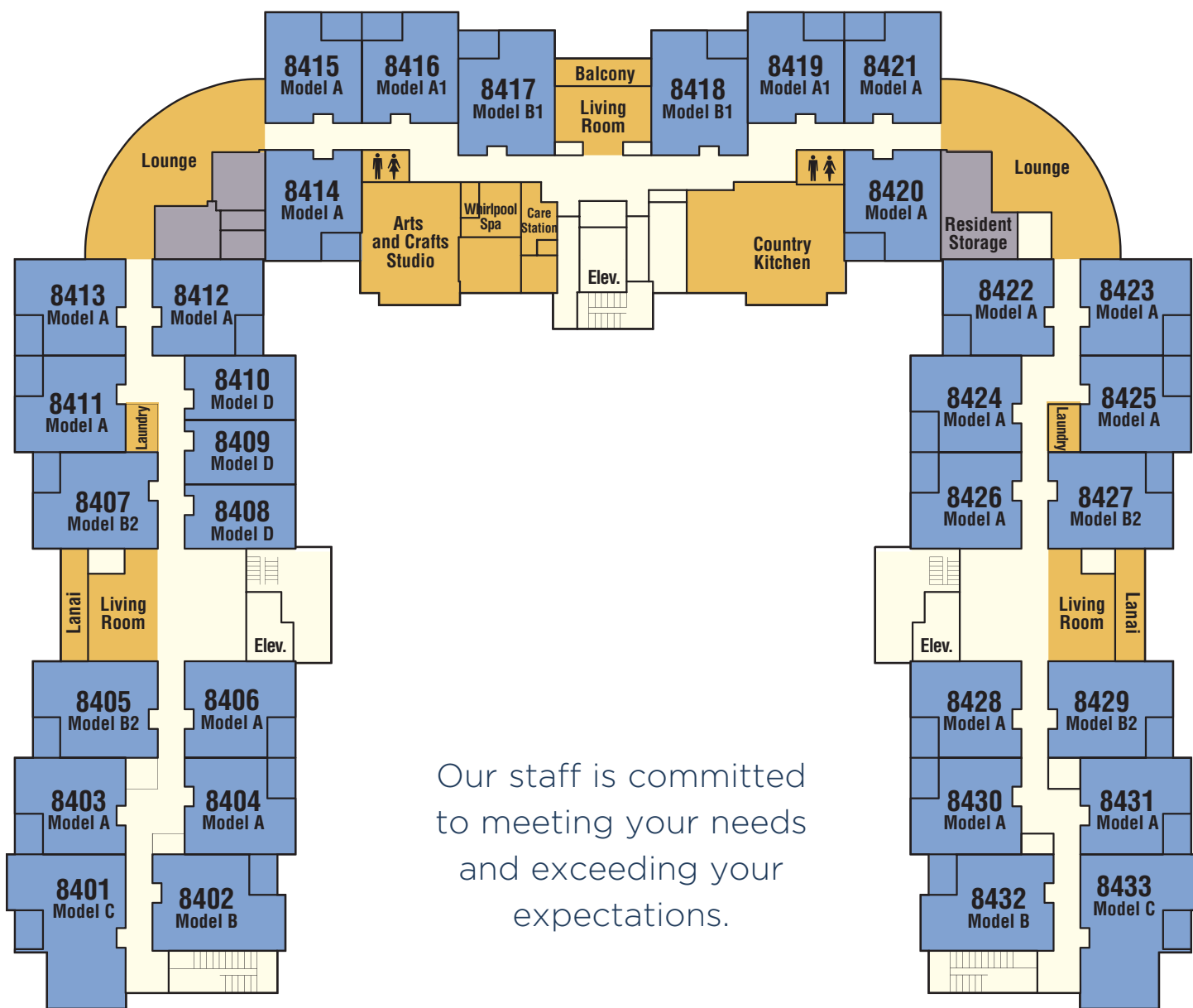
# THIRD FLOOR



The Arbor amenities include spacious lounges, an arts and crafts room, and a library. A recreational leader plans events that range from projects designed for life-long learning to social functions created for developing new friendships. Living rooms and lounge areas located throughout The Arbor serve as comfortable common spaces.







Our staff is committed to meeting your needs and exceeding your expectations.





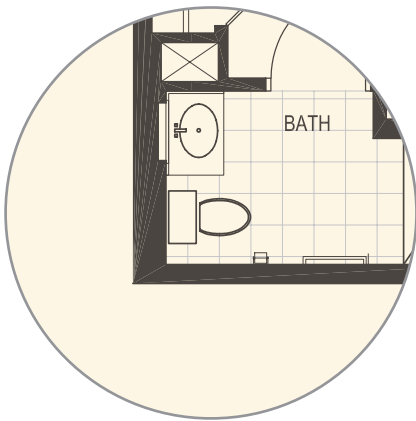
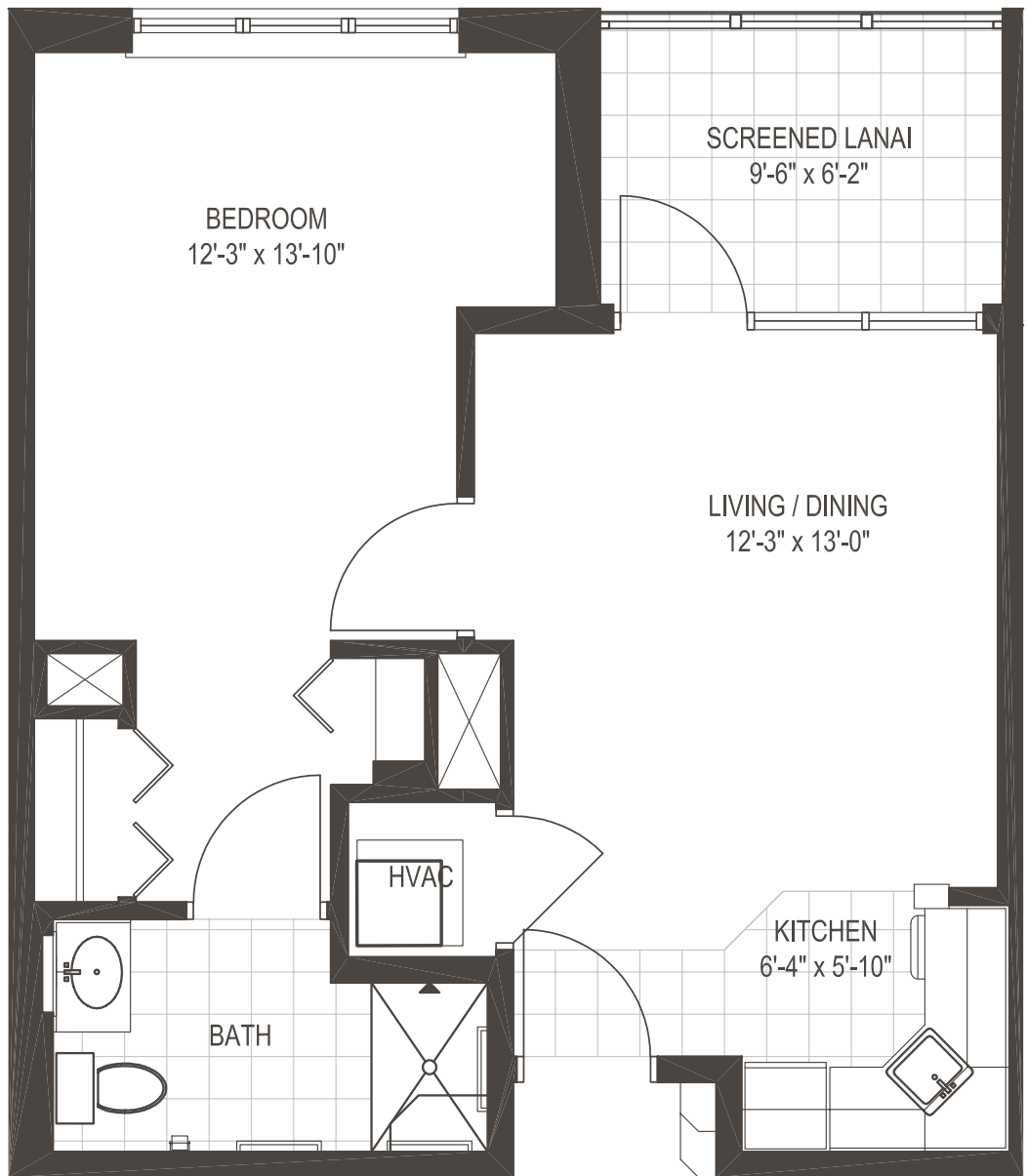
# Floorplans

Choose the floorplan that suits your lifestyle and budget.

The Arbor features 130 private residences. A variety of floorplans provide a range of sizes and prices for greater flexibility. Residents may bring their own furnishings or furnished apartments are also available. Friendly care staff perform a number of routine services including assistance in daily bed making, weekly linen and towel service, and housekeeping.

## 509 Square Feet Plus Lanai

- Screened-in lanai
- Large window in bedroom
- Kitchen with refrigerator, sink and microwave
- Tile floor in kitchen, bathroom and lanai
- Walk-in shower

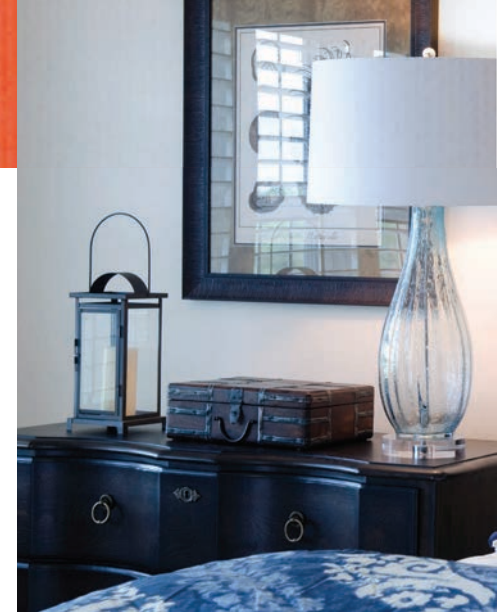


Model A1

Model A

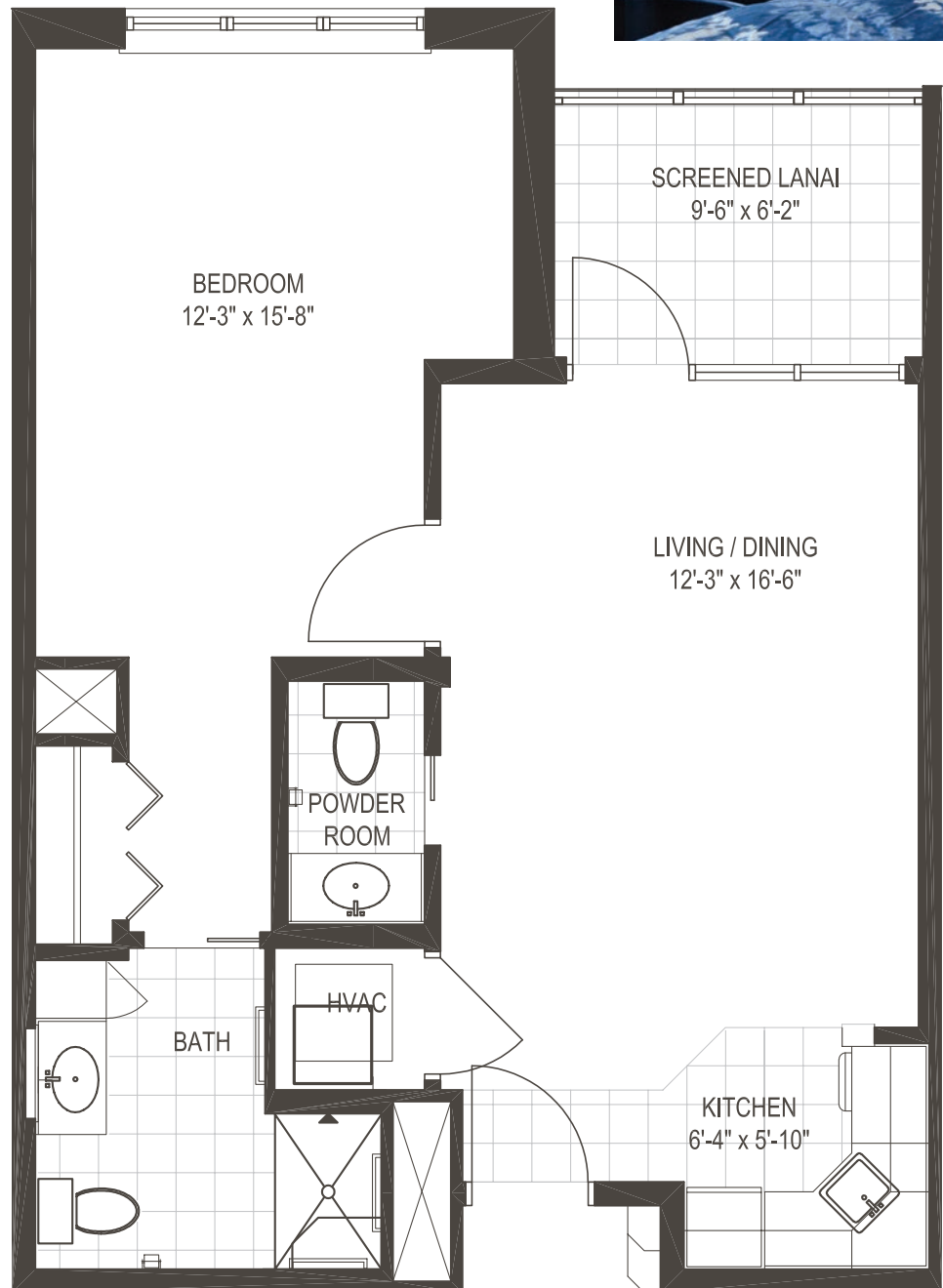
# Model B, B1, and B2

One-Bedroom Deluxe



## 616 Square Feet

- Screened-in lanai
- Large window in bedroom
- Kitchenette with refrigerator, sink and microwave
- An extra half-bath
- Tile floor in kitchen, bathrooms and lanai
- Walk-in shower



Model B

Drawings not to scale. Dimensions are approximate and may vary slightly.

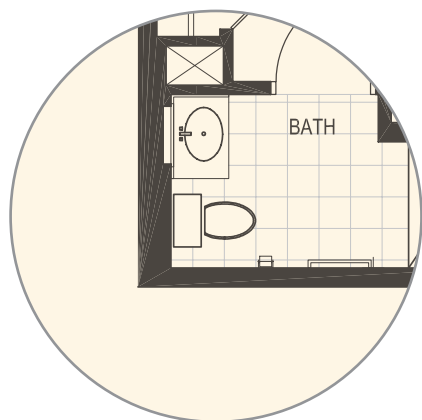
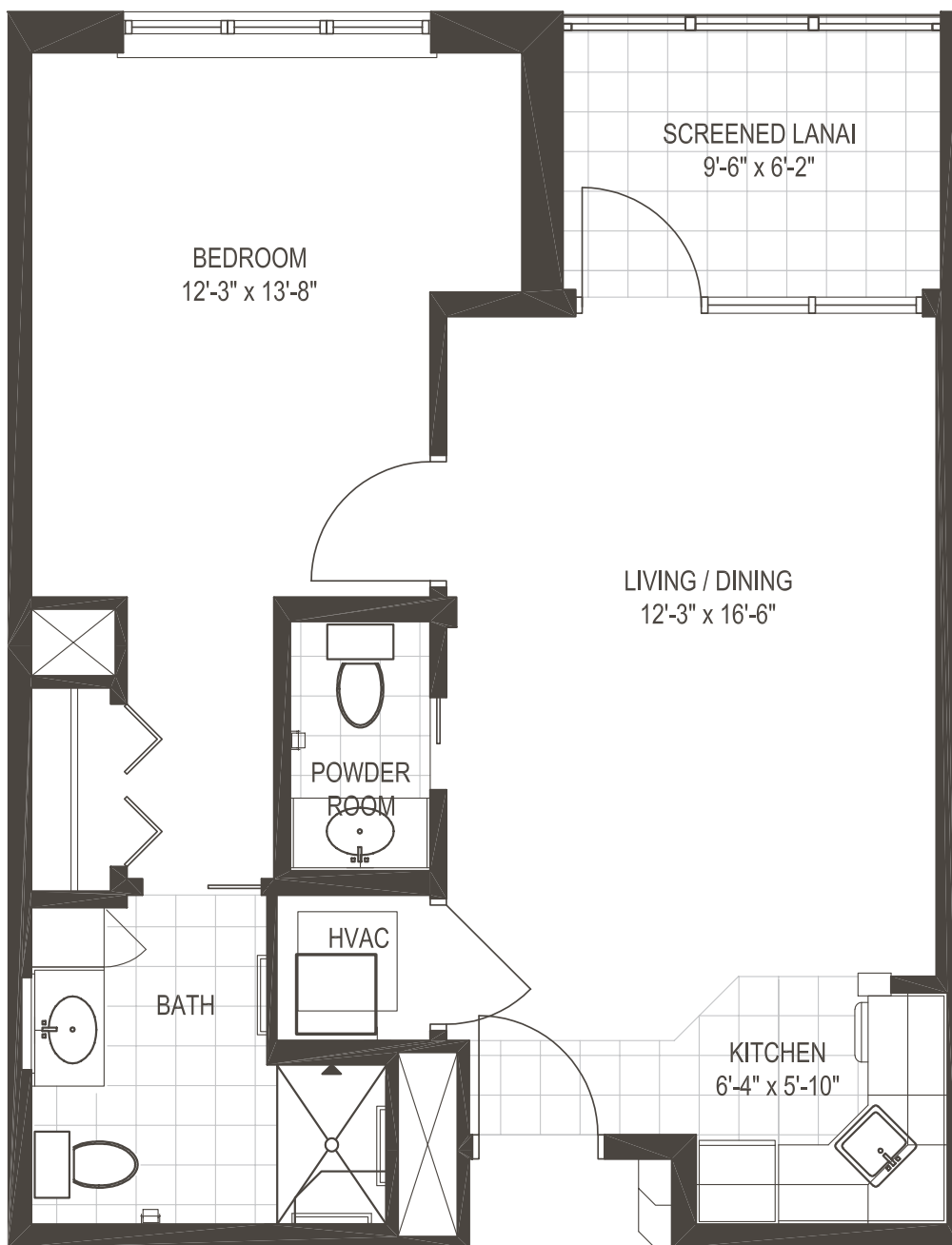
# Model B, B1, and B2

One-Bedroom Deluxe

## 591 Square Feet



- Screened-in lanai
- Large window in bedroom
- Kitchenette with refrigerator, sink and microwave
- An extra half-bath
- Tile floor in kitchen, bathrooms and lanai
- Walk-in shower



Model B2

Model B1

Drawings not to scale. Dimensions are approximate and may vary slightly.

# Model C

Two Bedroom

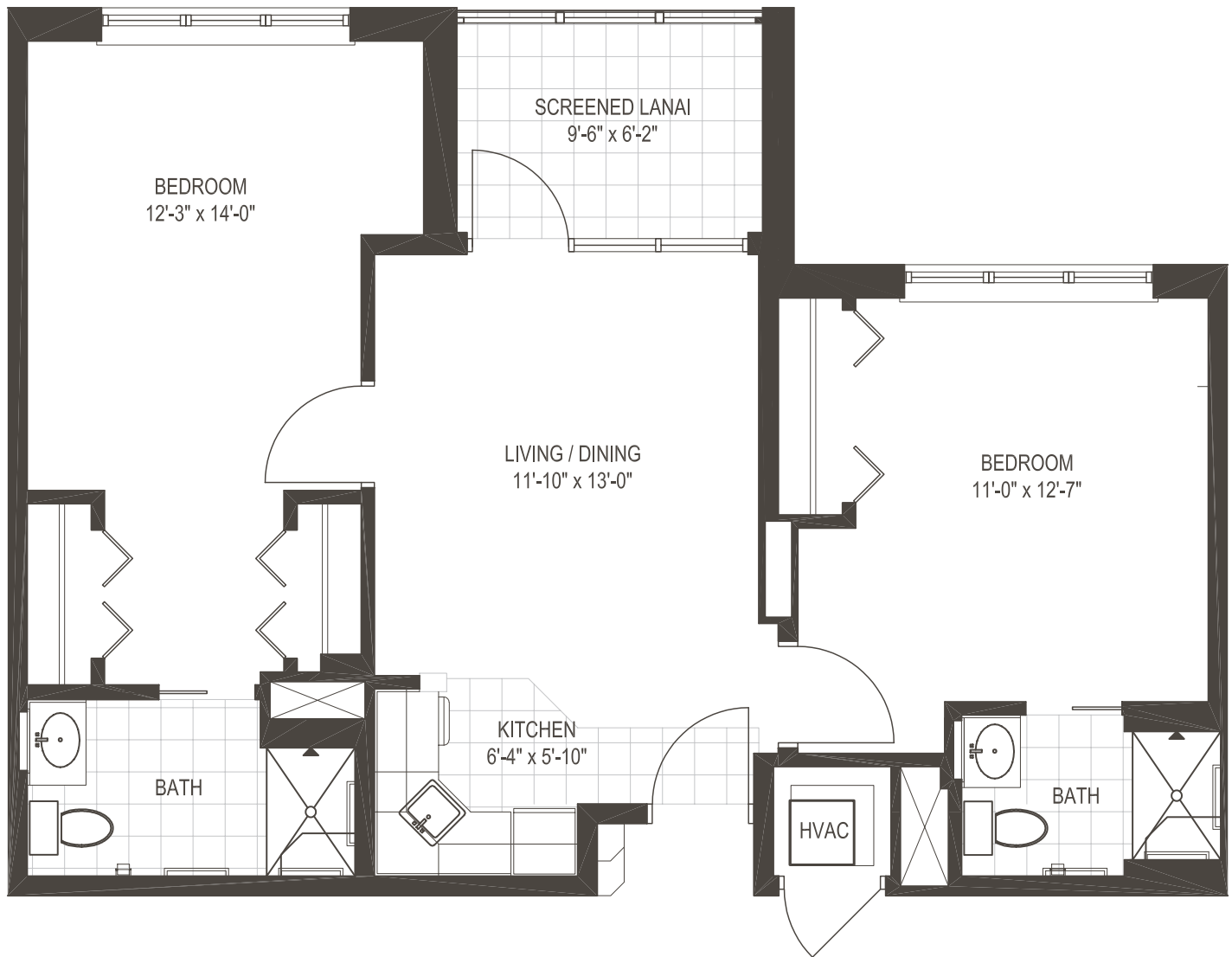
## 762 Square Feet



- Screened-in lanai
- Large windows in both bedrooms
- Kitchen with refrigerator, sink and microwave
- Extra closet space
- Two full bathrooms with walk-in showers
- Tile floor in kitchen, bathrooms, and lanai

Drawings not to scale. Dimensions are approximate and may vary slightly.

## 739 Square Feet



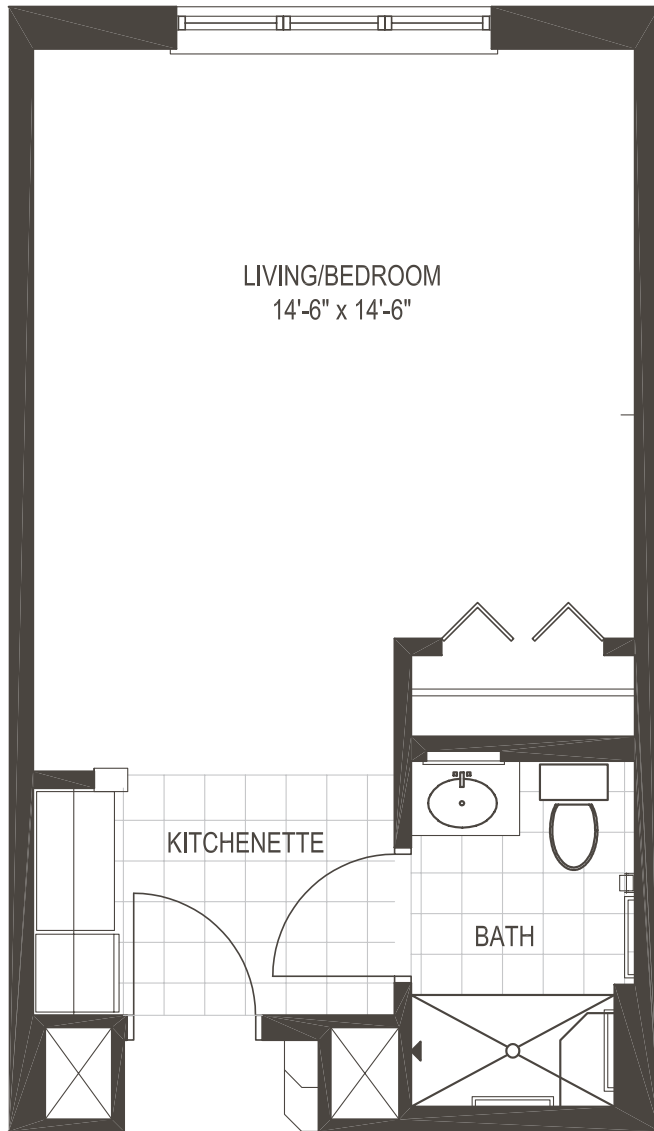
- Screened-in lanai
- Large windows in both bedrooms
- Kitchen with refrigerator, sink and microwave
- Extra closet space
- Two full bathrooms with walk-in showers
- Tile floor in kitchen, bathrooms and lanai

Drawings not to scale. Dimensions are approximate and may vary slightly.

# Model D

Studio

## 362 Square Feet



- Large window
- Kitchenette with refrigerator, sink and microwave
- Tile floor in kitchen and bathroom
- Walk-in shower

Drawings not to scale. Dimensions are approximate and may vary slightly.

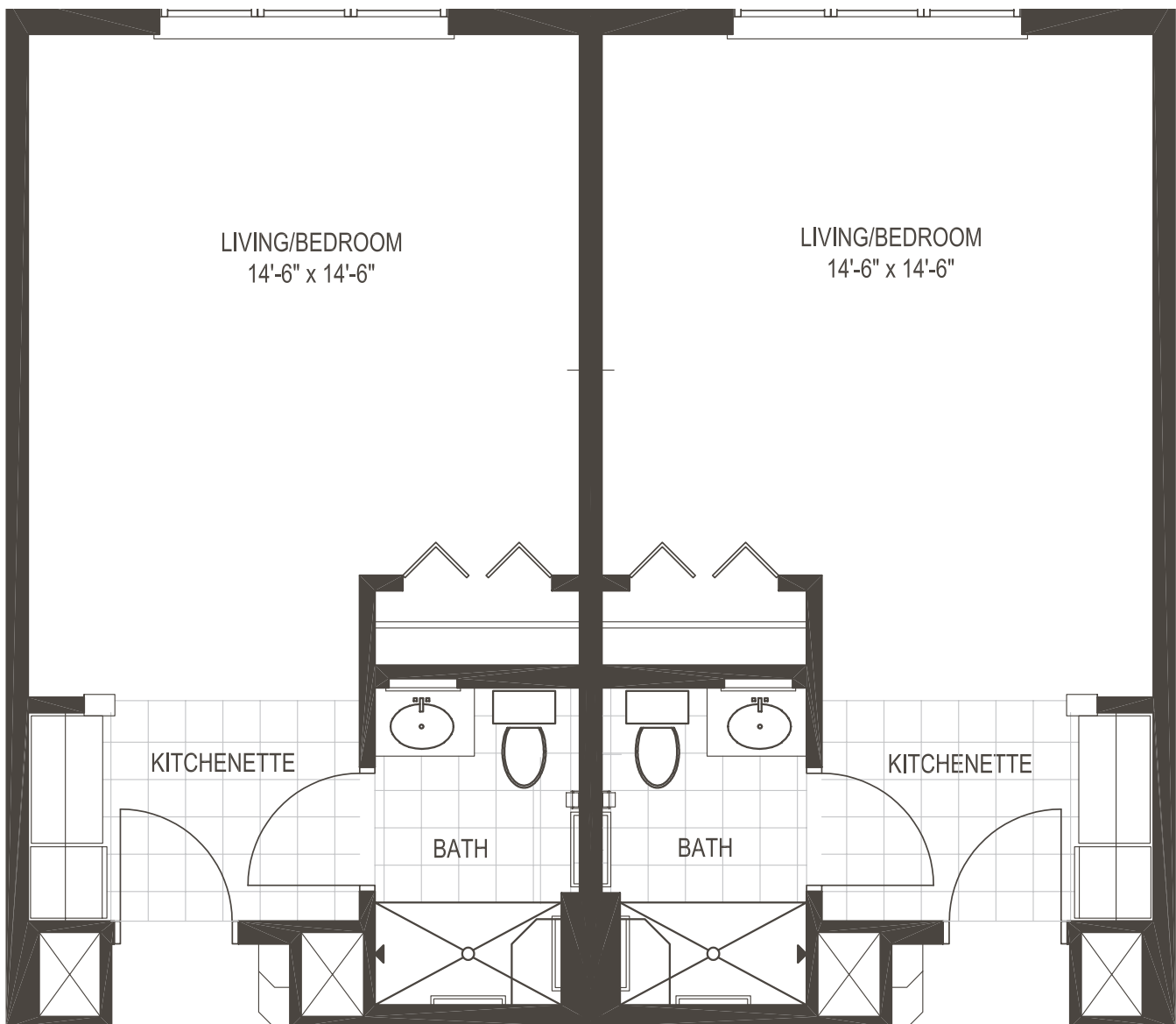


# Model E

Two Bedroom/Two Bath

- Spacious kitchenette features a refrigerator and microwave
- Furnished apartments available
- Spacious closets
- Two full bathrooms

## 724 Square Feet



Drawings not to scale. Dimensions are approximate and may vary slightly.

Notes: \_\_\_\_\_

\_\_\_\_\_

\_\_\_\_\_

\_\_\_\_\_

\_\_\_\_\_

\_\_\_\_\_

\_\_\_\_\_

\_\_\_\_\_

\_\_\_\_\_

\_\_\_\_\_

\_\_\_\_\_

\_\_\_\_\_

\_\_\_\_\_

\_\_\_\_\_

\_\_\_\_\_

\_\_\_\_\_

\_\_\_\_\_

Notes: \_\_\_\_\_

\_\_\_\_\_

\_\_\_\_\_

\_\_\_\_\_

\_\_\_\_\_

\_\_\_\_\_

\_\_\_\_\_

\_\_\_\_\_

\_\_\_\_\_

\_\_\_\_\_

\_\_\_\_\_

\_\_\_\_\_

\_\_\_\_\_

\_\_\_\_\_

\_\_\_\_\_

\_\_\_\_\_

\_\_\_\_\_

# A Perfect Setting

The Arbor is located in The Woodlands at Shell Point and includes 130 private residences that are available to both residents of Shell Point as well as individuals living outside the community.

The Arbor provides daily personal care and living assistance — offering individuals or couples a higher quality of life through supportive services.

The Woodlands neighborhood features miles of walking trails along sparkling lakes, fragrant gardens, tennis courts a swimming pool and much more.



(239) 454-2077

THE ARBOR AT SHELL POINT • 8100 Arbor Court • Fort Myers, Florida 33908  
Fax (239) 454-2295 • [www.shellpoint.org](http://www.shellpoint.org)

Shell Point is a nonprofit ministry of The Christian and Missionary Alliance Foundation, Inc.